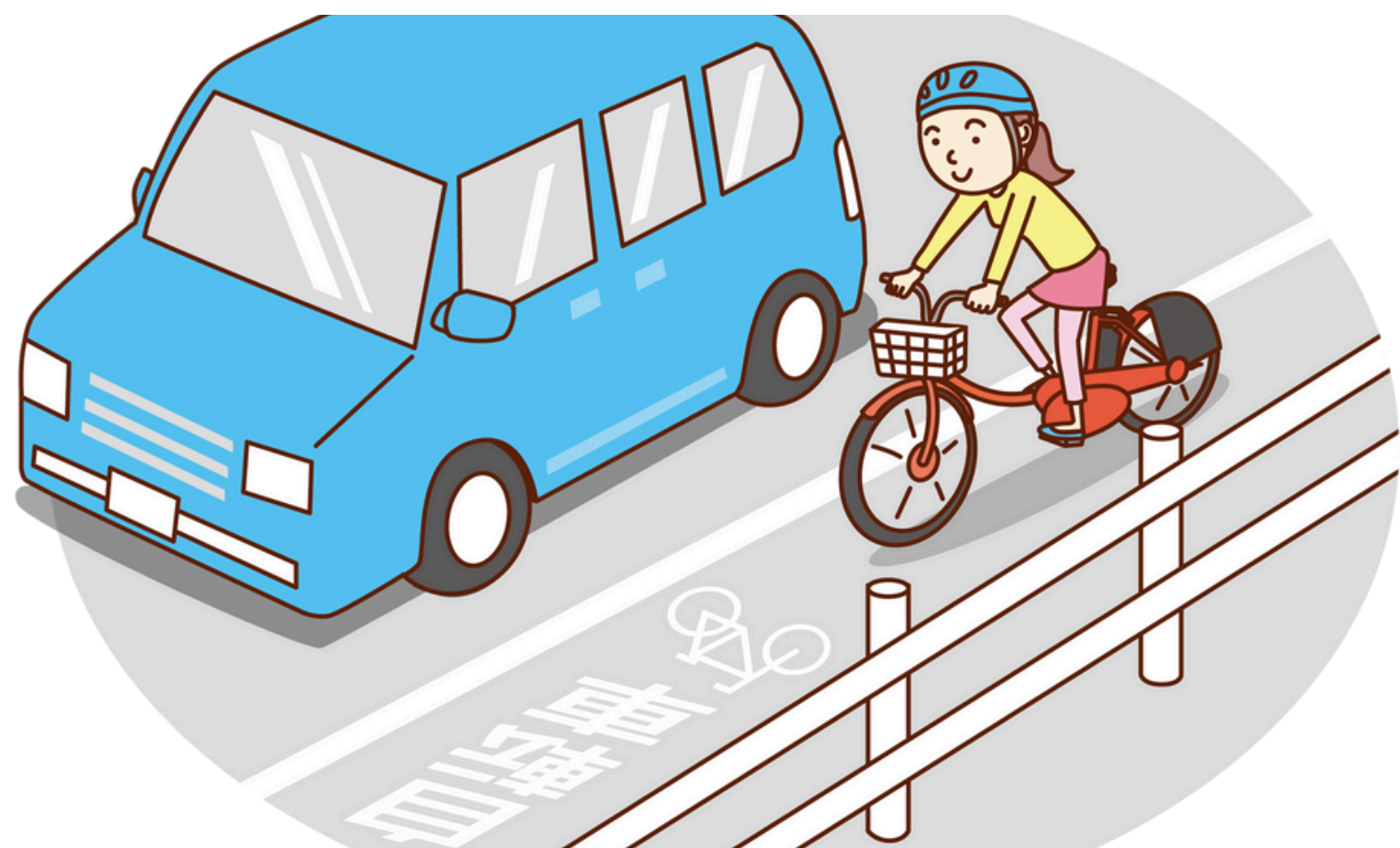




# Japan Bicycle Traffic Rules

● Cyclists have the same rights and responsibilities as motorists ●



## 1 Keep Left

Travel with the flow of traffic

Ride in the same direction as cars; riding against traffic is prohibited. (You may ride on the sidewalk only when the road is deemed dangerous.)

## 2 Yield to Pedestrians

On sidewalks where permit bicycles to be ridden, keep to the roadway side and ride slowly.

## 3 Wear a helmet

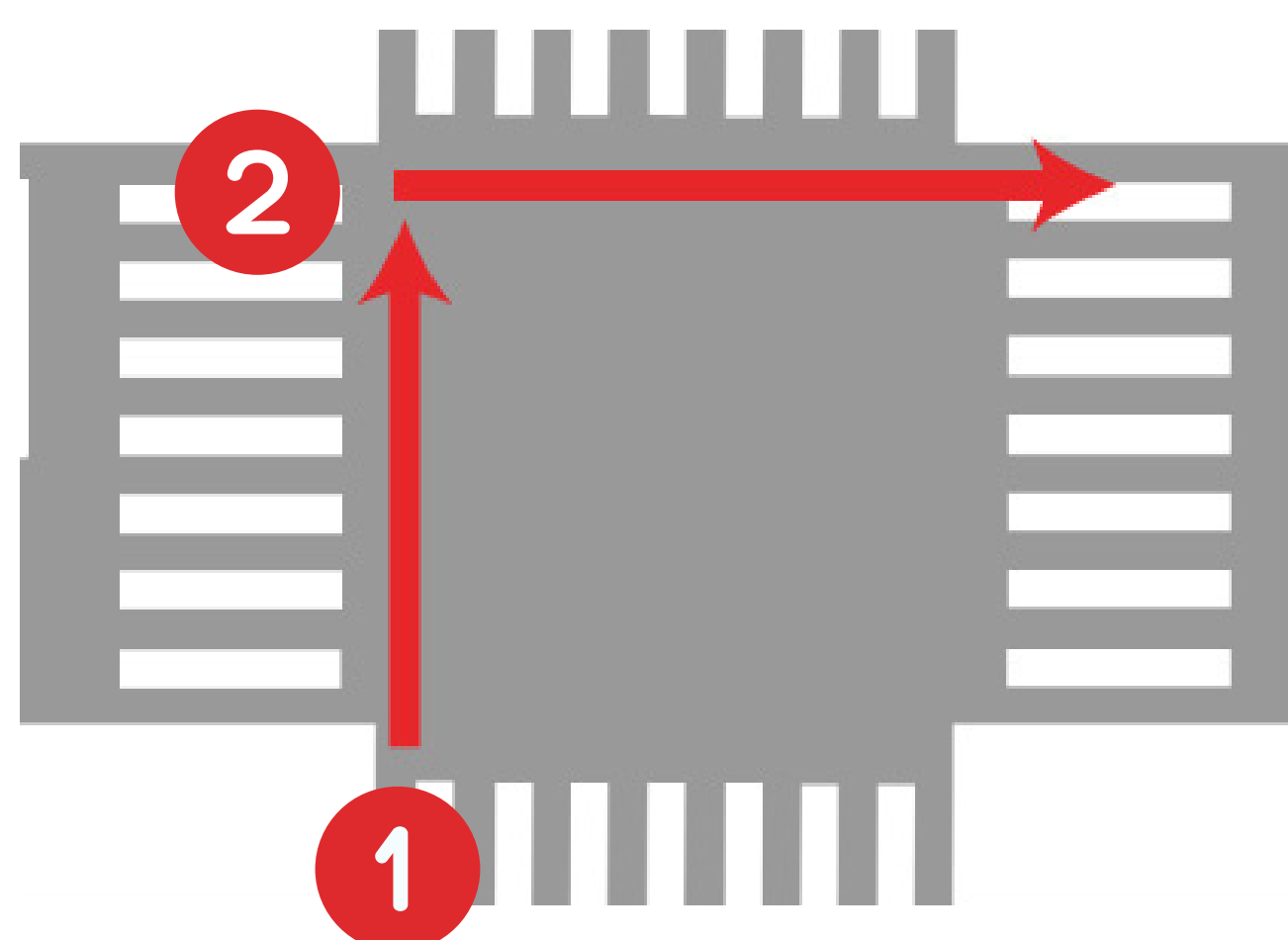
Helmet use is strongly encouraged.

## 4 Prohibited



These actions are prohibited.

- ⊘ Riding side by side
- ⊘ Riding with headphones on
- ⊘ Riding with an open umbrella
- ⊘ Cycling under the influence of alcohol
- ⊘ Using a mobile device



5

## Make right turns using the two-step right turn method.

A two-step right turn is a method for bicycles to make a safe right turn at intersections. Cyclists first cross the intersection straight ahead on the left side, then wait at the opposite corner before crossing again to the right.

REMEMBER

## IMPORTANT ROAD SIGNS

Stop



Drivers and cyclists must come to a complete stop at intersections before proceeding.

No Entry



Vehicles are prohibited from entering the road.

No Bicycles



Bicycles are prohibited from entering the road.



One Way

Vehicles are allowed to travel in only one direction on the road.



Bicycles Permitted

Bicycles may ride on the sidewalk but must go slowly.